

# Patient Wanderer Alert System

Increase Safety For Your Patients and Residents

## Stop Your Patients Walking Out the Door

Protect patients or residents diagnosed with Alzheimers and other mental conditions who are prone to wander from their facility undetected

When the at-risk patient or resident wearing a lightweight bracelet approaches a monitored exit the system triggers an alarm and temporarily locks the door if required

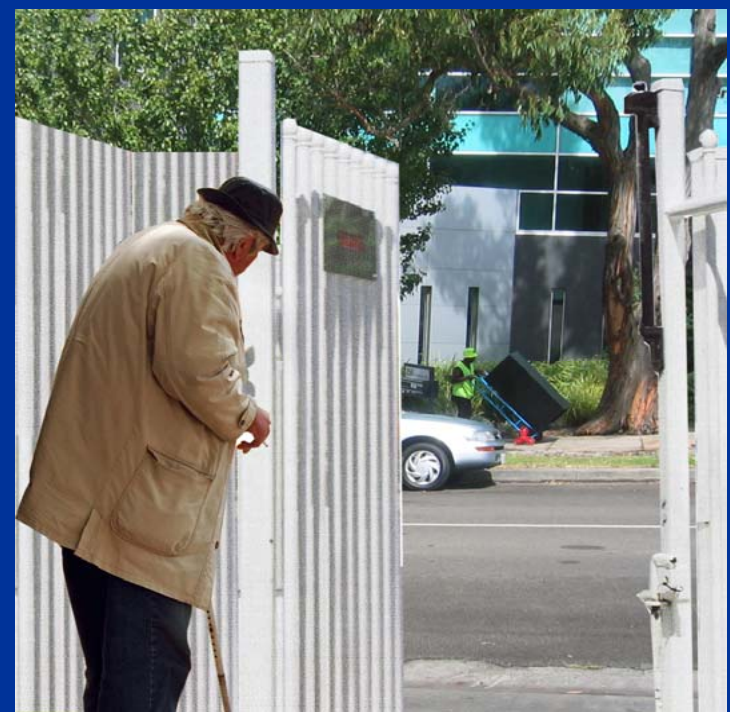
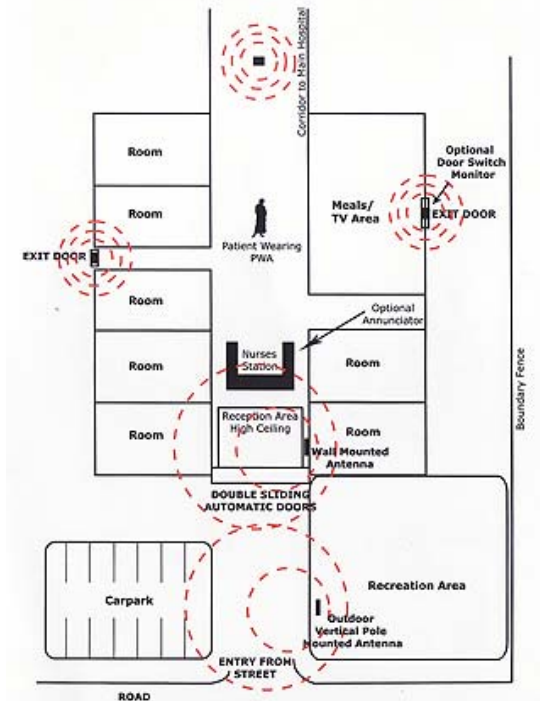
Patients and residents are allowed greater mobility and safety within the facility as points of exits are discreetly monitored by the system

## How the 2R5000 Systems Works

A patient bracelet tag transmits a low power radio signal every second for the duration of its 3-5 year life. This signal is received by 2R5000 and decoded

An alert/alarm is triggered when a valid tag is detected that is within range of the antenna depending on the alarm options that are preselected. Doors can be locked if required and will remain locked until the tag signal is no longer being received i.e. when the patient moves away from the monitored zone

The detection range can be adjusted if required to cater for different size doors, corridors or specific areas. The radio signal from a tag will pass through most non metallic materials including plaster walls and ceilings, brick, glass and timber, allowing the antenna to be concealed above a ceiling or behind a wall



## 2R5000 Patient Wanderer Alert System offers unique features:

- Stand Alone System for indoors or outdoors (optional external antenna for outdoor areas and gates)
- Adjustable Detection Range – caters for any size door, corridor or gate
- Battery Tag Life 3-5 years irrespective of use even if patient or resident were to stand by a monitored door for hours
- Reduce cost reduces the need for continuous staff supervision - improves security
- Lightweight, waterproof reusable tags attached using standard Hospital iD wristbands or wrist strap of your choice
- Relay Contacts for alarm outputs, door lock, DECT phones, Nurse Call Systems, visual and audible alarms and Access Control
- Simple installation by technicians or electricians

### Specifications

Model 2R5000

#### RF Specifications

Frequency 433.92MHz , 916.5MHz  
Modulation ASK  
Bandwidth < 1MHz  
Stability SAW Controlled

#### Outputs / Inputs

4 Form C Relay Contacts  
2A @ 30VDC or  
0.5@120V AC 6 Inputs,  
Dry Contact  
Audible Alarm Relay / Dry Contact  
Visual Alarm High Intensity Red  
Strobe (Optional)

#### Power

Supply Voltage 12VDC  
Max Current 60mA  
Battery Back up 4200mAh Cell Battery  
(Optional)

Antenna 50 Ohm BNC



### Other RFD Solutions

- Automatic Vehicle Identification
- Carparking
- Child Care Centres
- Cleaner Tracking
- Cold Supply Temperature Monitoring
- Gated Communities
- Guard Tracking
- Hands Free Access Control
- Maintenance Personnel Tracking
- Mining Industry
- Museums & Art Galleries
- Telecommunications
- Transport & Logistics
- Warehouse Control

# UNICOM

UNICOM Pty Ltd  
PO Box 184, Mt. Waverley, Vic 3149 Australia  
Tel 61(03)98879100 Fax 61(03)98868500  
www.unicompl.com sales@unicompl.com